

Word Find

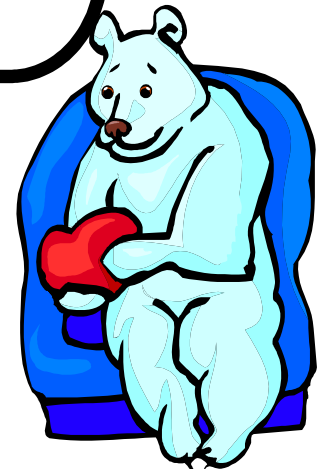


Use in Centers

or

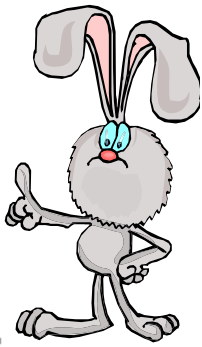
A great activity to use with your higher level students

I personally use this printable with my "gifted" students one day a week. One day each week, while I am reading the story from the basal series with my class, I have my gifted students work on this word find printable. This is a challenging activity for your higher level students. Many times these students do not need to read the basal story 5 days a week. This still keeps them involved with the story but in a more challenging way.





Title: _____



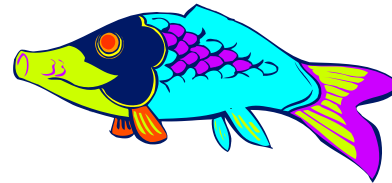
Nouns

person place thing or animal

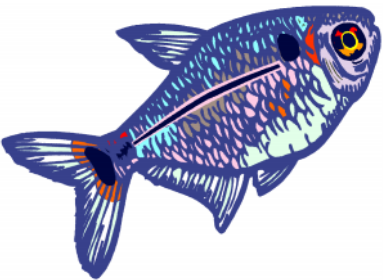
What is the main idea of the story?

Draw a detailed picture of your one sight word.

Blank rectangular box for drawing a picture of a sight word.



Sight Words



Large empty oval shape for writing or drawing.

Large empty star shape for writing or drawing.